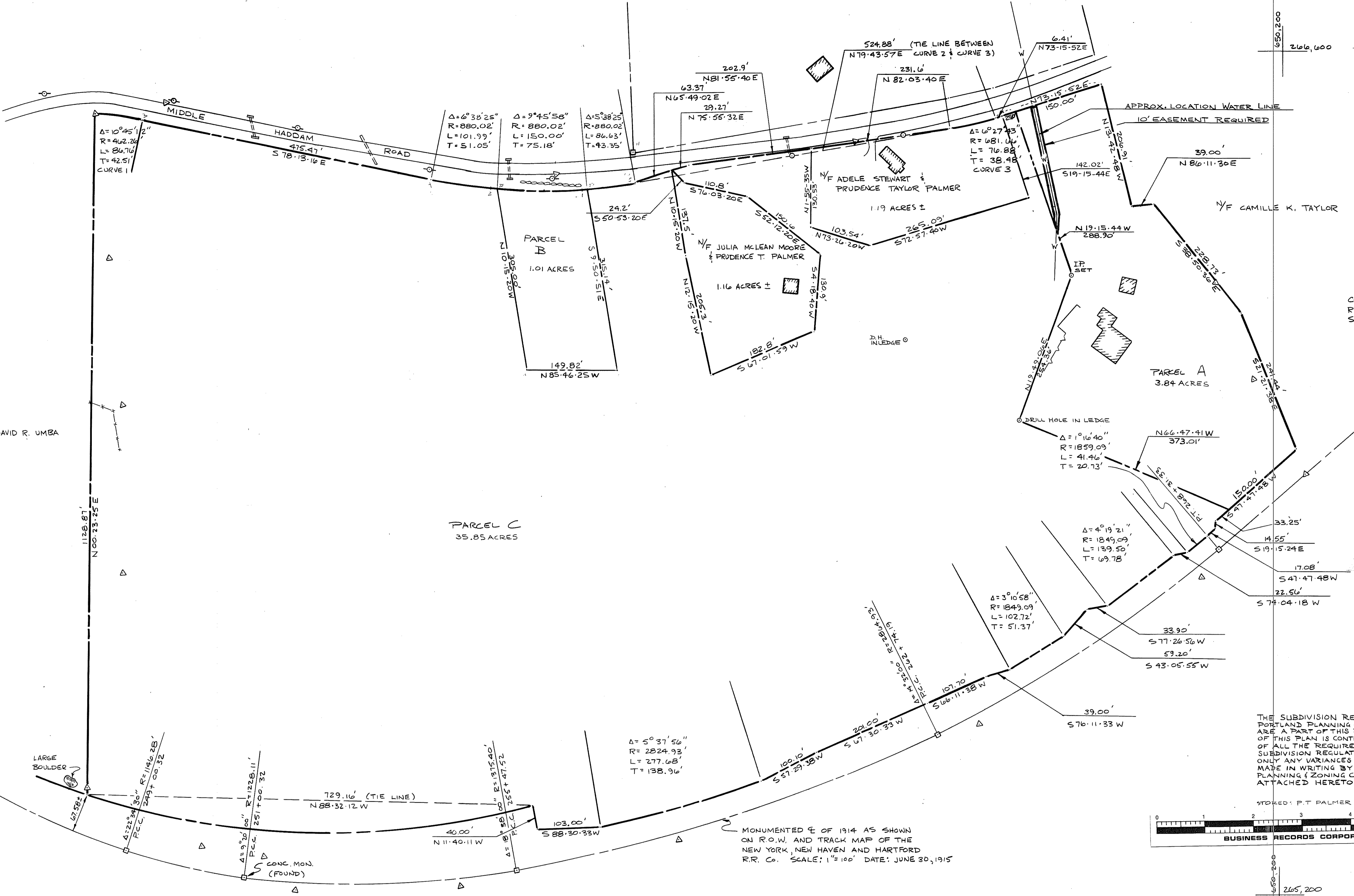


648,000
266,600

650,200
266,600

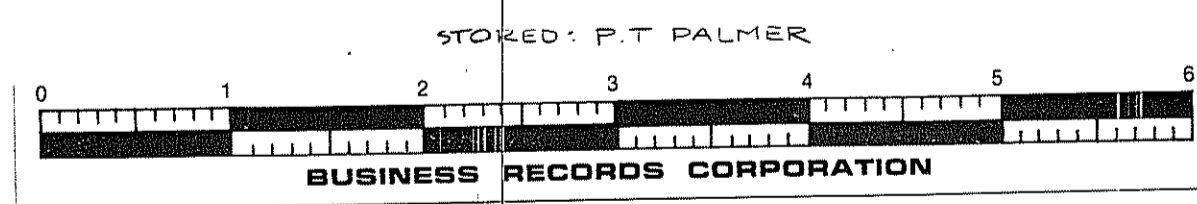
648,000
265,200

650,200
265,200

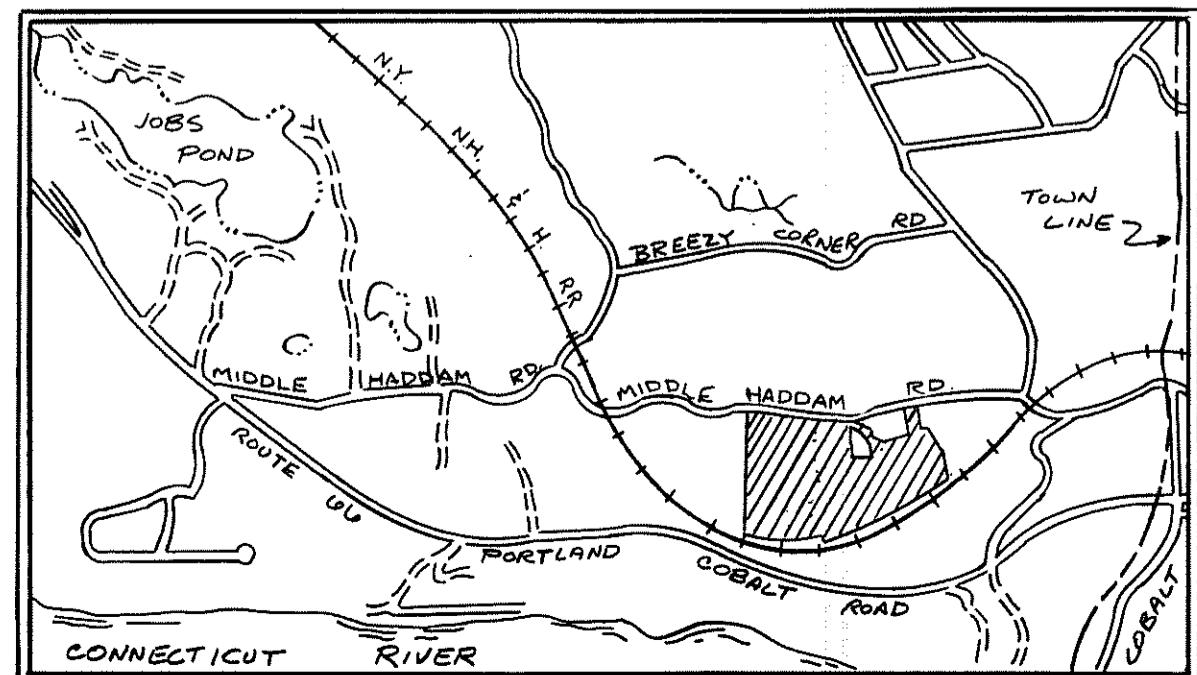


COORDINATES & BEARINGS REFER TO CONNECTICUT STATE PLANE SYSTEM

THE SUBDIVISION REGULATIONS OF THE PORTLAND PLANNING & ZONING COMMISSION ARE A PART OF THIS PLAN, AND APPROVAL OF THIS PLAN IS CONTINGENT ON COMPLETION OF ALL THE REQUIREMENTS OF SAID SUBDIVISION REGULATIONS, EXCEPTING ONLY ANY VARIANCES OR MODIFICATIONS MADE IN WRITING BY THE PORTLAND PLANNING & ZONING COMMISSION AND ATTACHED HERETO.



MONUMENTED & OF 1914 AS SHOWN ON R.O.W. AND TRACK MAP OF THE NEW YORK, NEW HAVEN AND HARTFORD R.R. Co. SCALE: 1"=100' DATE: JUNE 30, 1915



LOCATION PLAN
SCALE: 3/4"=1 MILE

APPROVED BY PORTLAND PLANNING AND ZONING

CHAIRMAN _____ DATE _____
SECRETARY _____ DATE _____

*(Attorney) 1/1/88 by 9/5/88 A.
Bernadette McQuinn
Town Clerk*

SOME INFORMATION FOR MOORE & STEWART PARCELS TAKEN FROM A MAP BY GEORGE E. ANDERSON - DATED: DEC. 1951 - SCALE: 1"=30'

REV SEPT. 30, 1988

SUBDIVISION OF LAND OF PRUDENCE TAYLOR PALMER MIDDLE HADDAM ROAD, PORTLAND, CONNECTICUT

PLAN OF SUBDIVISION	DATE: 9-2-70
	SCALE: 1"=80'
DAVID B. MYLCHREEST Consulting Engineer Civil - Structural - Survey Laurel Grove Rd. Middletown, Conn.	DRAWING NO. 4
	FILE NO. 7627

'A-2'

SACCO PRODUCTS • NEW HAVEN, CONNECTICUT
FORMER BY PART NUMBER 8552
FORMER BY PART NUMBER 8552
FORMER BY PART NUMBER 8552
FORMER BY PART NUMBER 8552
FORMER BY PART NUMBER 8552
FORMER BY PART NUMBER 8552